



## LawSoft CAD/RMS - GIS Mapping with e911 & AVL (Automated Vehicle Location)

The LawSoft CAD/RMS System offers true GIS Mapping and Automated Vehicle Location (AVL) and e911 that is designed to push data both to and from the GIS map in our application. This creates a birds-eye view of live situational policing activities and allow allows for historical call plotting for hot-spot policing tactics. These administrative tools can be used in developing patrol strategies based on the activity in your jurisdiction.



## LawSoft Mugshot

The LawSoft Mugshot system includes a Cannon T6 Camera mounted and connected directly to your Arrest and Digital media modules for seamless mugshot capture directly into the CAD/RMS system. Also perfect for non-fingerprint arrests, sex offender registry, obtaining images of injuries as well as scars, marks and tattoos.

## LawSoft Doc-U-Scan

The LawSoft document scanning system allows agencies to seamlessly integrate desktop scanners to the digital media system in the Digital media module. Scan single page or multi-page documents directly into the system as PDF or Tiff depending on your preference. This reduces the need for printing and scanning and allows external documentation to be included into case files at the click of a button.

## LawSoft / BEAST Interface

The LawSoft / BEAST evidence interface allows for evidence data to instantly display in the LawSoft RMS section for evidence once it is entered into the BEAST. Statuses of evidence items along with current location of that evidence will always be instantly available for viewing, printing or saving as PDF.

## LawSoft / Infocop eSeek Scanner & eTicket Interface

The LawSoft will not only interface with Infocop for DMV lookups in NJ, NY & PA, but we can now utilize the mobile eSeek Driver's license Scanner used for Infocop to auto-populate into LawSoft thus eliminating the need to manually type in the Driver's License. LawSoft can also seamlessly download all of your eTickets into the LawSoft RMS were they can be searched in master name inquires as well as the attached cases that they are associated with which saves time with discovery and OPRA requests.

## iLawSoft

The iLawSoft App for iOS and Android is now available on iTunes and Google Play and puts your CAD/RMS system in the palm of your hand.

Status	Officer	Car	Location	Call Type
On Scene	Sgt. Ronald Frost 2	684	25 Lakeside Avenue	Water / Sewer Utility Complaint
On Scene	Pt. Robert Grabowski 2	685	126 Union Avenue	10-9 Break
Available	Pt. Kevin Peirsel 5	689	On Patrol	Awaiting Call From Dispatch
Available	Pt. Conrad Jimenez 7	685	On Patrol	Awaiting Call From Dispatch
Available	Pt. Sami Zaidan 8	680	On Patrol	Awaiting Call From Dispatch
Back Refresh			Total Officers On Shift Available	7 4

Case Number	Date	Time	Call Type
17-2809	09-13-2017	11:45-54	Transport
Incident Location			
101	Star Lake Road		
Officer			
Pt. Conrad Jimenez 7			
Case Number	Date	Time	Call Type
17-2806	09-13-2017	08:55-56	Motor Vehicle Accident
Incident Location			
5	Main Street		
Officer			
Pt. Conrad Jimenez 7			
Cancel Update			Click on case to get more info.
			16 Cases Generated

Name	Street	City	Phone
New Jersey State Police	Headquarters - P.O. Box 7055	West Trenton, NJ 08628-0068	609-882-2000
New Jersey State Police Lab	1755 Route 40 East	Little Falls, NJ	973-256-7790
NEWARK WATERSHED	1294 MCBRIDE AVE.	LITTLE FALLS	201-256-4965
Back Refresh		Get Business Contacts	



### **LawSoft Fire CAD / EMS CAD**

LawSoft, Inc. offers integrated Fire & EMS CAD solutions that will allow dispatchers to record specific information that is needed by both Fire & EMS agencies. Times, call types, zones, and onsite alerts will differ greatly for Police, Fire & EMS responding personnel. LawSoft gives you the ability to independently track responses for all 3 agencies while still being connected to the same CAD entry in Police Dispatch. The flexibility in LawSoft will also allow agencies to push CAD information to other dispatchers or dispatch locations where agencies separate the dispatch responsibilities for each agency. Mandatory EMS State data tracking for EMS dispatch is produced with a couple of keystrokes and a button push to send the information monthly to the required State agency. Fire reporting is instant to all major NIFRS reporting systems and silent paging is built-in.



### **LawSoft / Live Scan Interface**

The LawSoft CAD & RMS System will interface with your agency's Live Scan System. Idemia (Morpho), Crossmatch & Dataworks will all interface to our arrest module. Data from the LawSoft Arrest Report will be sent to the Live Scan session to automatically populate the fingerprint cards. Mugshots that are acquired are then made available for inclusion in the LawSoft Arrest & Digital Media, which will sync to Case Management.

### **LawSoft Crash Report Interfacing**

The LawSoft Crash Report can be seamlessly transmitted upon approval to various web based crash report providers such as Car Fax and Lexis Nexis. We also can submit reports to the NJ DOT via Data Motion and are currently working with the DOT for XML submissions.

### **LawSoft Silent Paging for Police Fire & EMS**

Silent messages can be automatically or manually sent via email or SMS text from the Police CAD based on call type or by selecting a predefined recipient group. This is helpful in instant notifications to administration, detective bureau or outside organizations that need notifications such as the ACO or DVRT responders. This services is also available to Fire & EMS responders via I Am Responding, eDispatch and others.

### **LawSoft Fire & EMS NIFRS Interfacing**

The LawSoft Police CAD and Fire / EMS CAD will seamlessly send data to various NIFRS and EMS Charting systems such as ERS (Emergency Reporting), Firehouse, Codes by FireFile and Red NMX. ESO and EMS Charts will also receive data from our EMS CAD system allowing EMS responders to access their call data.

### **LawSoft CryWolf Alarm Billing Interface**

The LawSoft Police CAD will automatically segregate false alarm calls and send them to the CryWolf system for automated alarm billing. This is performed seamlessly when dispatchers enter the nature of the call for service and the call disposition. This functionality eliminates countless hours of tabulating false alarm calls and responses as well as the billing for those responses to false alarms.



## LawSoft Internal Affairs RMS

The LawSoft Internal Affairs Record Management System brings your agency the same simple to use interface to allow you to easily manage forms and IA investigations as per the AG Guidelines.



### Key Benefits:

- Attorney General's Internal Affairs forms available
- IA forms required for accreditation
- Case tracking with IA status and days open counter
- Instant officer IA history inquiry
- Digital media attached to IA case file
- Segregated data and enhanced security scheme
- Annual and quarterly statistical reports for AG compliance
- A must for Internal Affairs unit and Police Administration

## LawSoft EWS (Early Warning System)

The LawSoft Early Warning System allows you to track officer's behaviors with silent notifications via text or email to select staff members. LawSoft EWS also integrates with the CAR/RMS and LawSoft IA System.

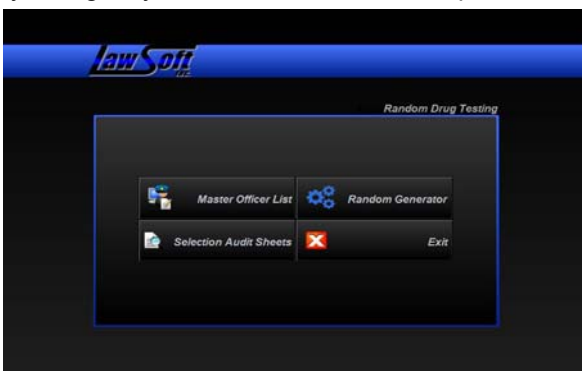


### Key Benefits:

- Attorney General's predefined behaviors
- Supervisor access for recording behavior activity
- Entry tracking by officer, department or specific behavior
- Instant notification to designated personnel when behavior threshold is crossed
- Segregated data and enhanced security scheme
- Annual and quarterly statistical reports
- A must for the Office of Professional Standards and Police Administration

## LawSoft Random Drug Testing

The LawSoft Random Drug Testing module is a secure Attorney General compliant system that will provide your agency the convenience of a simple button click to randomly select your desired number of officers



- Create a printable list of the selection pool
- Create a printable list of excluded officers including the reason for exclusion
- Create a printable selection form to memorialize selection and witnesses present
- Maintain a master list of all tests for archival purposes
- Allows for the attachment of scanned digital documentation of test results when received
- Tests are serialized to indicate no gaps the in officer selection process